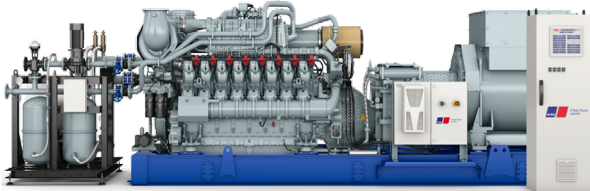




**W.W. Williams**  
CONSIDER IT DONE.

# Combined Heat and Power Solutions

*Reliable, high-efficiency power for today's distributed energy landscape*



## WHAT IS CHP?

Combined Heat and Power (CHP) is the future of resilient energy. As microgrids and distributed power systems grow, CHP improves efficiency and reduces greenhouse gas emissions by generating electricity and capturing useful heat that would otherwise be wasted.

### CHP + MICROGRIDS:

CHP systems work seamlessly with microgrids—localized networks that can operate independently or with the main power grid—to provide dependable, low-cost energy.

### DISTRIBUTED ENERGY = SMARTER ENERGY

Microgrids blend renewables, high-efficiency fossil fuel generators, and Energy Storage Systems (ESS) to create flexible, solutions for the future.

## APPLICATIONS WE'RE BUILT FOR:

Some of our core markets:

- ▶ Healthcare & Hospitals
- ▶ Water & Sewage Treatment
- ▶ Airports
- ▶ Landfills
- ▶ Data Centers
- ▶ Aquatic Centers
- ▶ Hotels & Resorts
- ▶ Industrial & Manufacturing
- ▶ Agriculture & Greenhouses
- ▶ Residential & Utilities
- ▶ Livestock & Dairy
- ▶ Brewers
- ▶ Commercial Buildings

Our CHP solutions help these industries and more **stay powered all year long.**



**W.W. Williams**  
CONSIDER IT DONE.

AUTHORIZED DISTRIBUTOR FOR



A Rolls-Royce  
solution

W.W. Williams is proud to offer **mtu** Kinetic PowerPacks—engineered for efficiency, longevity, and unshakable reliability. Let us help you power your future.

## LET'S TALK POWER

**Give us a call**  
(832) 606-9281

For more information visit:  
[williamspowersolutions.com/continuous-natural-gas-chp](http://williamspowersolutions.com/continuous-natural-gas-chp)

## SYSTEM SPECS & SERVICE

We're with you every step of the way.

### System Specs (mtu 4000 GS):

- ▶ 8/12/16/20V cylinders
- ▶ 776kWe – 2,530kWe
- ▶ 95% availability | 90% total efficiency

### Natural & renewable gases

- ▶ 3-in-1 cogeneration: electricity, heat, and cooling
- ▶ Fast ramp rates, low load downtime, long TBO

### Service Capabilities:

- ▶ 24/7/365 emergency response
- ▶ PM services & fluid analysis
- ▶ Switchgear & load bank testing
- ▶ Portable rentals
- ▶ All manufacturers supported

### Technical Expertise:

- ▶ 121+ generator-specific techs
- ▶ NFPA & EGSA certified
- ▶ Factory-trained in mtu, Cummins, Kohler, Generac & more

## BEST IN CLASS FEATURES OF OUR CHP SYSTEMS

Engineered for high-performance and long-term value, our CHP systems incorporate a range of advanced features that set them apart in efficiency, responsiveness, and operational reliability. Key performance attributes include:

- ▶ Best in class power density
- ▶ Electrical efficiency > 44.4% and max fuel utilization
- ▶ Fast and flexible response +/-40% < 30s
- ▶ Low load operation down to 35%
- ▶ Economic Life Cycle Cost (LCC)/Total Cost of Ownership (TCO)
- ▶ Time between overhaul 84,000h
- ▶ Low oil consumption



**W.W. Williams**  
CONSIDER IT DONE.

AUTHORIZED DISTRIBUTOR FOR



A Rolls-Royce  
solution

W.W. Williams is proud to offer **mtu** Kinetic PowerPacks—engineered for efficiency, longevity, and unshakable reliability. Let us help you power your future.

## LET'S TALK POWER

**Give us a call**  
(832) 606-9281

For more information visit:  
[williamspowersolutions.com/continuous-natural-gas-chp](http://williamspowersolutions.com/continuous-natural-gas-chp)